
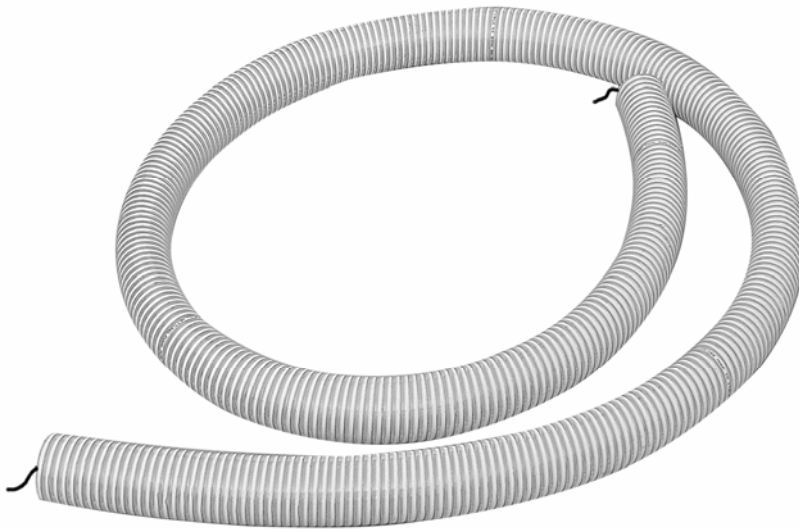


ANTISTATIC FOR GENERAL CLEANING with ground cable

 Suitable for ATEX classified zones



Food-grade hose

Ø	Code
32	32078
40	32067
50	32074
70	32068
100	32077

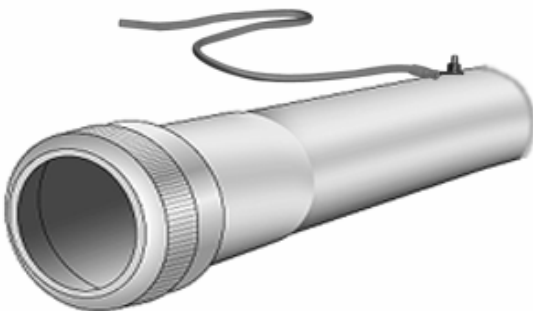
sold per meter

Non food-grade hose

Ø	Code
40	32083
50	32084
70	32085
100	32077


sold per meter

Coupling with ground connection with ring-nut for accessories



Ø	Code
40	34611
50	34609
70	34612




 Suitable for ATEX classified zones

RUBBER FOR MACHINE-TOOL AND HEAVY-DUTY CLEANING for metallic shavings also mixed with oil

"T" type hose
conductive and abrasion-proof



 *Suitable for ATEX
classified zones*

Ø	length mm	Code
40	1000	21518
	2000	21519
	3000	21520
	4000	21521
	5000	21522
50	1000	21523
	2000	21524
	3000	21525
	4000	21526
	5000	21527
70	3000	21528
	4000	21529
	5000	21530
100	3000	21531

RUBBER FOR MACHINE-TOOL AND HEAVY-DUTY CLEANING for liquids and aggressive oils

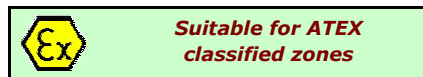
"AO" type hose
oil-proof (non-conductive)



Ø	length mm	Code
40	1000	21736
	2000	21737
	3000	21738
	4000	21739
	5000	21740
50	1000	21741
	2000	21742
	3000	21743
	4000	21744
	5000	21745
70	3000	21746
	4000	21747
	5000	21748

METALLIC FOR HOT MATERIALS AND OVEN CLEANING

Flexible metallic hose
with fitting (*) and suction inlet (*)



Ø	Code
40	34655
50	34656
70	34657
100	34658

sold per meter

2m-length
complete hose

fitting Ø	inlet Ø	Code
50	40	32160
50	50	32200

(*): diameter to be indicated at purchase

FLEXIBLE FOR HOT MATERIALS AND OVEN CLEANING

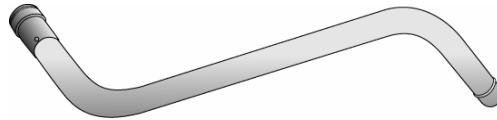
Self-extinguishing hose



Ø	length mm	Code
40	3000	32100

FOR FLOOR CLEANING

Double-bend wand



Aluminium

Ø	Code
40	34305
50	34306
70	34016

Metal

Ø	Code
40	34019
50	34017



Suitable for ATEX
classified zones

FOR SHELVES AND FURNITURES CLEANING

120° bent
extension wand



Aluminium

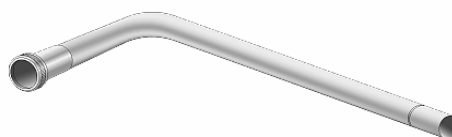
Ø	Code
40	34423
50	34269
70	34270
100	34271



Suitable for ATEX
classified zones

FOR AERIAL PIPINGS AND SHELVES CLEANING

90° bent
extension wand



Aluminium

Ø	Code
40	34125
50	34126



Suitable for ATEX
classified zones

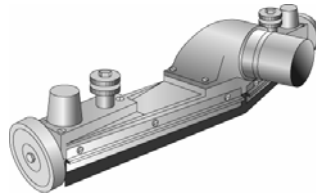
Terminal accessories for industrial use

ac
05

5

FOR FLOOR CLEANING (use with double-bend wand)

Adjustable squeegee with wheels



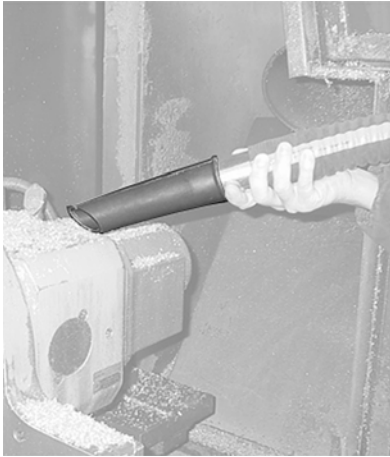
Ø	width mm	Code
40	300	34077
	420	34078
	580	34079
50	300	34080
	420	34081
	580	34082
70	300	34088
	420	34089
	580	34090



*Suitable for ATEX
classified zones*

FOR MACHINERY AND GENERAL CLEANING

Rubber conical-nozzle oil-proof and conductive



with fitting

Ø	Code
40	34127
50	34130
70	34132



rubber only

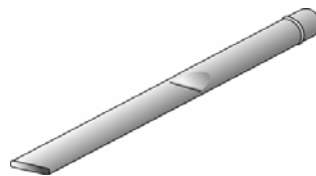
Ø	Code
40	32001
50	32003
70	32000



Suitable for ATEX
classified zones

FOR MACHINERY AND GENERAL CLEANING

Flat nozzle

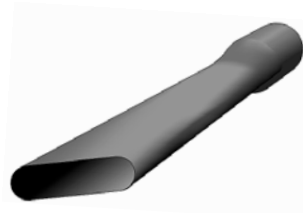


Metal

Ø	length mm	Code
40	350	32005
	600	32016
50	350	32006
	600	32040



Suitable for ATEX
classified zones



PVC

Ø	length mm	Code
40	500	32005
50	500	32006